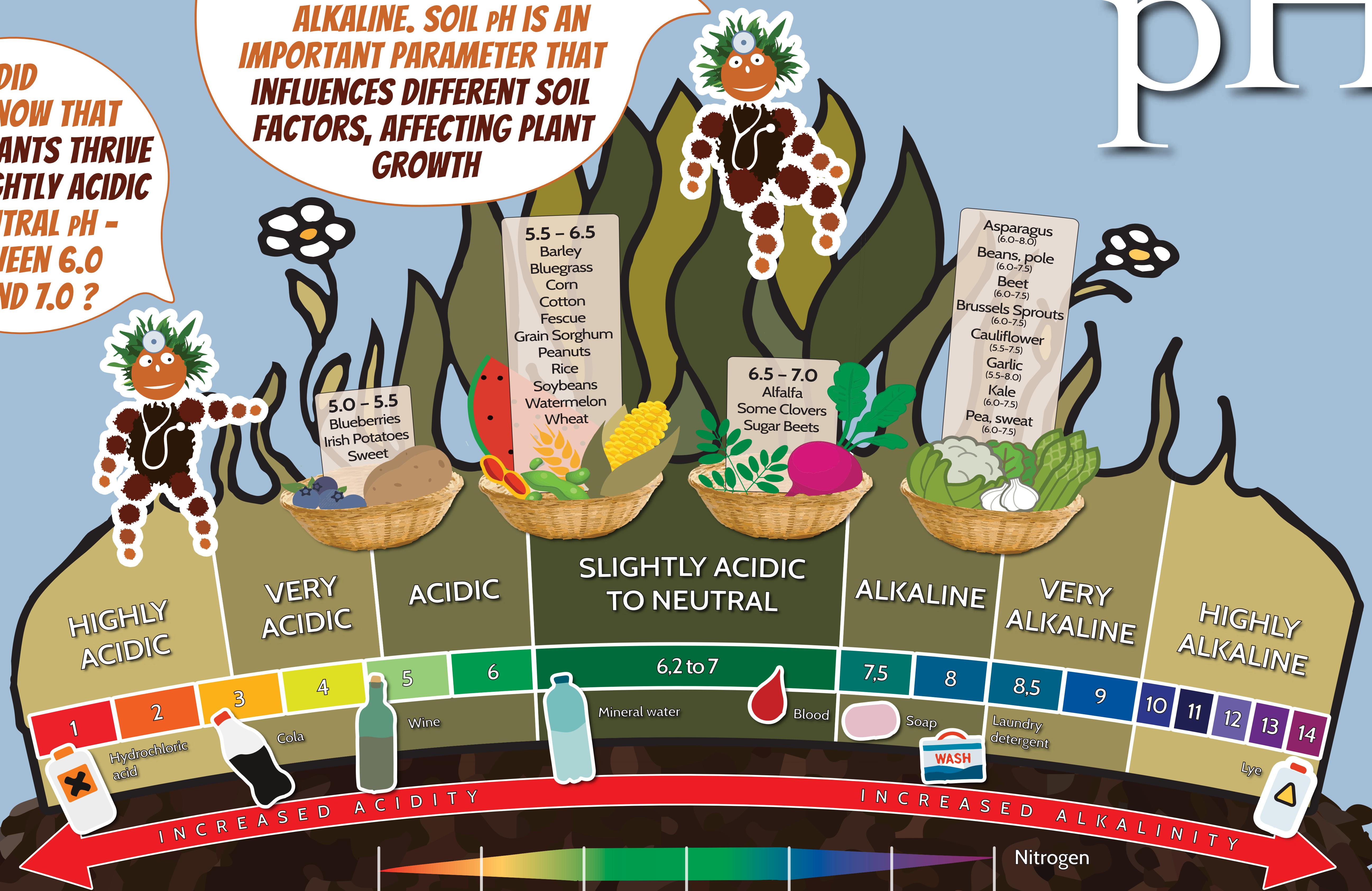


WHAT IS

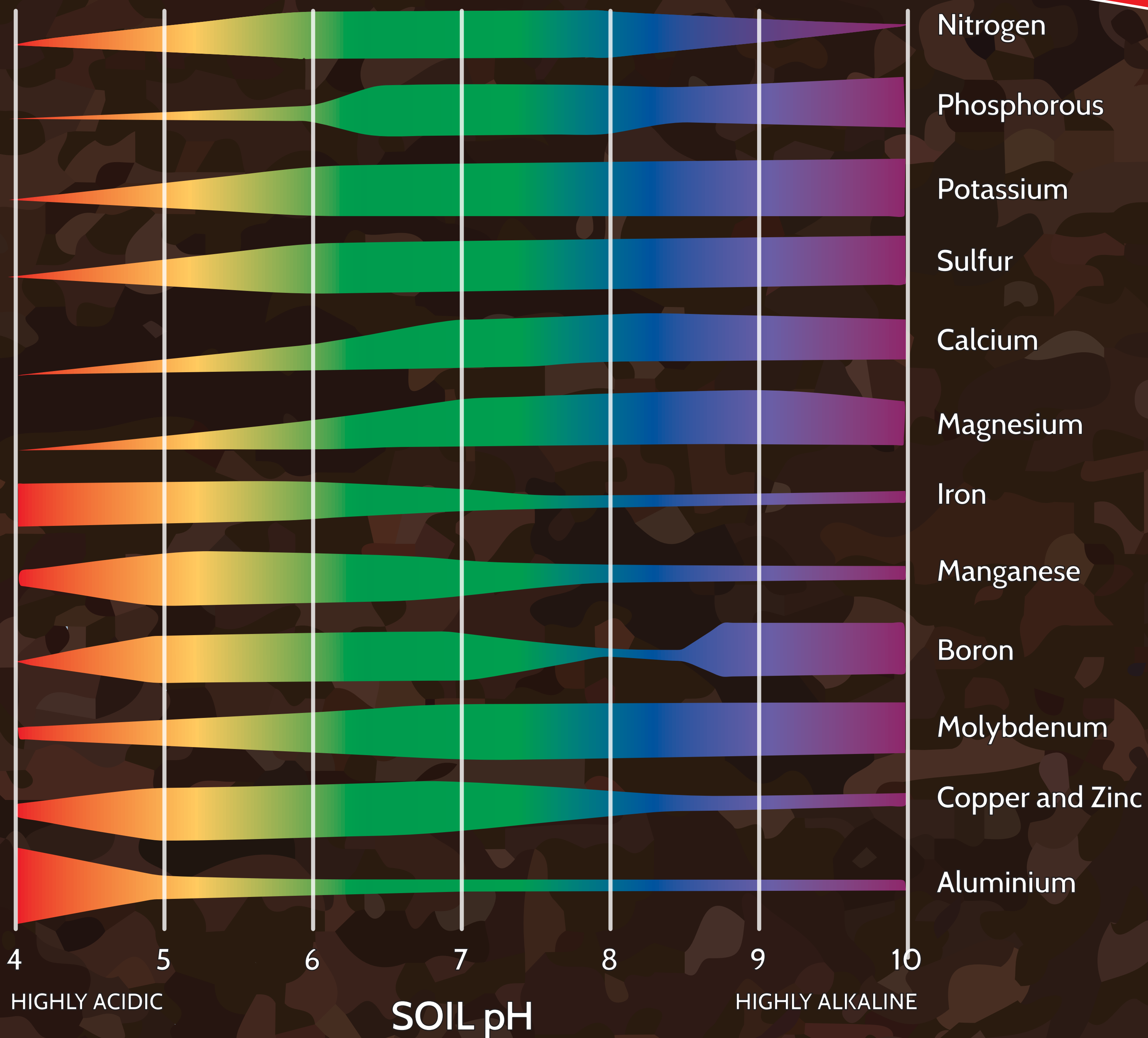
# soil pH

**SOIL pH EXPRESSES THE ACTIVITY OF THE HYDROGEN IONS IN THE SOIL SOLUTION. THIS TELLS YOU WHETHER YOUR SOIL IS ACIDIC, NEUTRAL OR ALKALINE. SOIL pH IS AN IMPORTANT PARAMETER THAT INFLUENCES DIFFERENT SOIL FACTORS, AFFECTING PLANT GROWTH**

**DID YOU KNOW THAT MOST PLANTS THRIVE IN A SLIGHTLY ACIDIC TO NEUTRAL pH - BETWEEN 6.0 AND 7.0?**



**AS YOU CAN SEE HERE, SOIL pH AFFECTS THE AVAILABILITY OF MINERAL NUTRIENTS TO PLANTS AS WELL AS MANY SOIL PROCESSES. THIS DIAGRAM SHOWS YOU AT WHICH pH THESE NUTRIENTS ARE AVAILABLE FOR PLANT UPTAKE**



**LET'S USE THESE SIMPLE METHODS FROM OUR TESTING METHODS MANUAL TO CHECK IF YOUR SOIL IS ACIDIC OR ALKALINE**

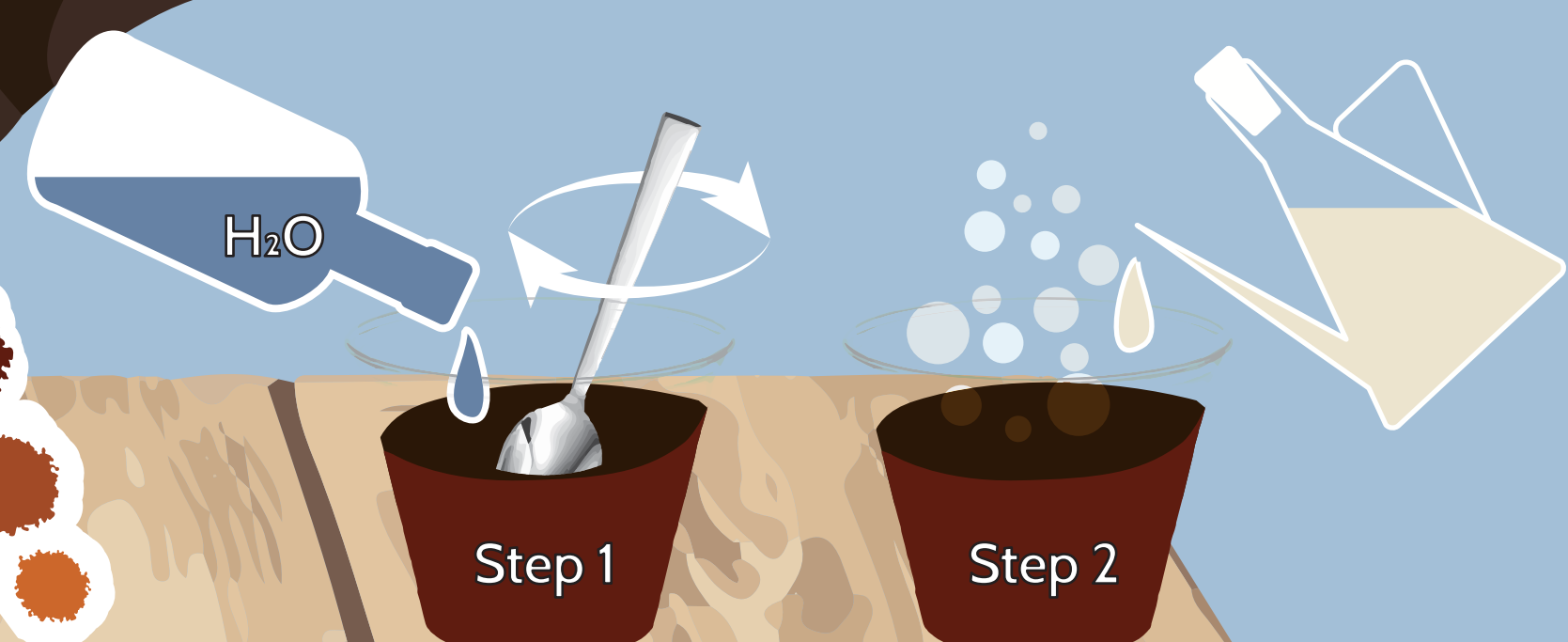
**IS YOUR SOIL ACIDIC?**



Put some of your soil in a cup and add some water. Mix it into a paste.

Add baking soda. If the mixture fizzes, forms bubbles or foams your soil

**IS YOUR SOIL ALKALINE?**



Put some of your soil in a cup and add some water. Mix it into a paste.

Add vinegar. If the mixture fizzes, forms bubbles or foams your soil is alkaline.

Thanks to the financial support of

