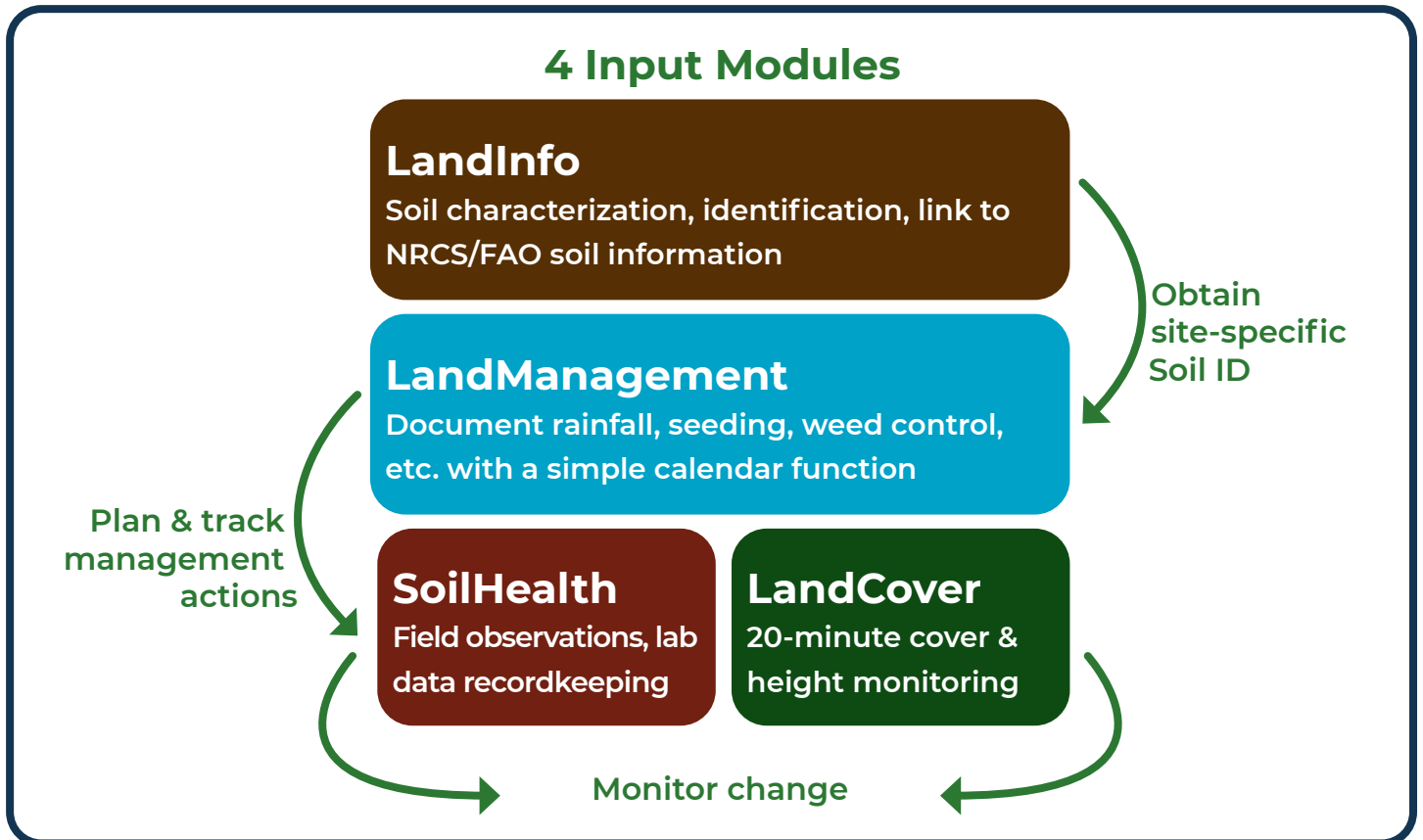



One app, many applications.

Download the LandPKS mobile app to:


- ▶ **Determine** your land's potential by identifying your soil and ecological site
- ▶ **Access** soil, ecological site and habitat information
- ▶ **Monitor** soil health, vegetation cover & structure, and measure soil color
- ▶ **Keep** management records





LandPKS is consistent with other systems:
Soil: USDA-NRCS, FAO
Vegetation: USDA-NRI, BLM-AIM
Open TEAM (open-source software for agriculture)

LandPKS takes data privacy seriously.
 Choose to share on our global Data Portal or keep information private.



See a complete list of our development and implementation partners on LandPotential.org.



Get more information & register for updates at LandPotential.org

Version: November 2020

Get started using LandPKS in 5 easy steps:

Step 1

Download the LandPKS mobile app for Android or iOS

- Register a Gmail address to use the LandPKS app and access your data on the Data Portal.
- Note: Google independently authenticates your account. LandPKS does not have access to your Gmail login.

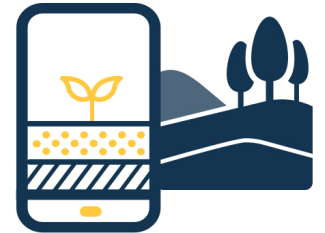


Step 2

Click the + to create a new site*

- Name your first site and obtain the GPS coordinates.
- In the report tab, you can already view possible soils under **Soil ID** and possible wildlife species on your land under **Habitat**.

**Or click on the Map to view possible soils without creating a site.*



Step 3

Enter data in the Data Input tab

- **LandInfo:** record slope, texture, color for Soil ID.
- **LandCover:** Rapid (20-minute) vegetation monitoring with a yard stick or meter stick.
- **SoilHealth:** record and store lab data + field observations aligned with soil health indicators.



Step 4

Click “Synchronize Now” at the top of the data input screen when you have a data connection to:

- Backup your data to the cloud. This ensures your data will always be available to you, including after updating the app or loading it on a new phone. It also allows you to access your data on the Data Portal.
- Get new soil predictions after you enter LandInfo data (Under Report, in the SoilID section, view the *GPS+Data* and *Data* tabs).



Step 5

View data and results in the Report tab

- **Soil ID:** view your updated site-specific soil ranking, access information about potential vegetation and restoration options through EDIT.
- **LandManagement & SoilHealth:** generate PDF reports.
- **Habitat:** view species that may occur near your location and compare habitat characteristics with your data.
- Visit the **Data Portal** at LandPotential.org to download a .csv file of your data to share with others.



For additional resources, including step-by-step instructional videos, visit the Knowledge Hub at LandPotential.org/knowledge-hub/