



## The Lega Indigenous People

- *Protecteurs des forêts*
- *Gardiens de la culture*
- *Préserver la nature*



# THE SHABUNDA PROJECT

Climate Past and *Future--Now is our time to thrive--What planet are you on?*

Patrick Kaka, Dir. GIERI; Marcel Mulombo

In collaboration with Planet Alpha Forest

Bruno D.V. Marino Ph.D. CEO and Founder ,

[www.planetalphaforest.earth](http://www.planetalphaforest.earth)

# The Problem: Humanity is Vulnerable to Climate Change

**SPECIAL REPORT**

## Global Warming of 1.5 °C

An IPCC special report on the impacts of global warming of 1.5 °C above pre-industrial levels and related global greenhouse gas emission pathways, in the context of strengthening the global response to the threat of climate change, sustainable development, and efforts to eradicate poverty.

Scientific Assessments Continue to Predict Harmful Surface Warming (Are Predictions Reliable?)

Actual GHG Measurements Point to Increased Atmospheric Loading (Are Policies Ineffective?)

Year	Global CH <sub>4</sub> (ppb)	Global CO <sub>2</sub> (ppm)
1980	~1700	~320
1985	~1750	~330
1990	~1800	~340
1995	~1850	~350
2000	~1900	~360
2005	~1950	~370
2010	~2000	~380
2015	~2050	~390

Population Increase  
11+ Billion @2100  
(Unstoppable Reality)

Demand for Energy  
Results In GHG Increase &  
Global Warming

Increasing Ecosystem  
Destruction & Loss of  
Food Systems,  
Biodiversity & Nature



# Shabunda, DRC, The Green Ring of Fire

## Empower Indigenous Communities To Protect Intact Rainforest Now

Don't let the Congo Basin burn like the Amazon--connect with communities that live in the forest and support their efforts to restore and conserve intact rainforest



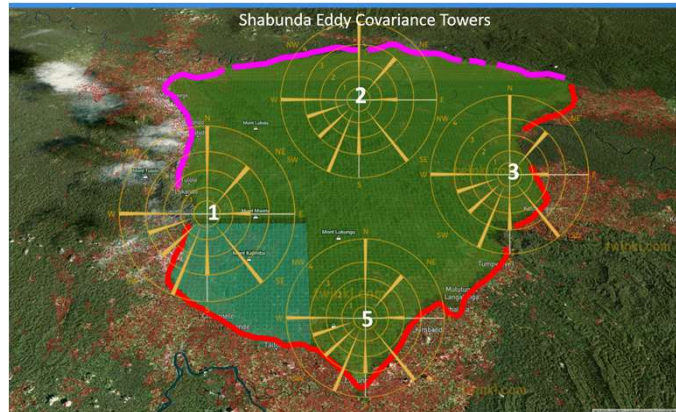
# SHABUNDA PROJECT



## Empower Indigenous Communities To Protect Intact Rainforest Now

Don't let the Congo Basin burn like the Amazon--connect with communities that live in the forest and support their efforts to restore and conserve intact rainforest

Kasangati  
Mont Kalimba  
Mont Lukumbu

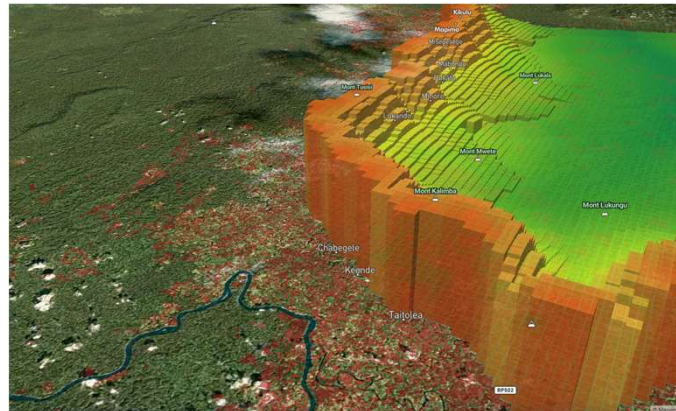


GIERI & PLANET ALPHA CORP SHABUNDA PROJECT: INTO THE GREEN HEART OF AFRICA



- JOBS Employment
- AGRICULTURE
- HEALTHCARE
- EDUCATION
- ENERGY
- ECOTOURISM
- ROADS
- REFORESTATION

Sustainable Development Goals



# GIERI--A MOTIVATING FORCE FOR THE DRC


www.gieri.org



shabunda.myshopify.com

# SHABUNDA: Simply Restore/Conserve Forests & Pay For It

Download the project portfolio document here: [https://planetalphaforest.earth/wp-content/uploads/2017/06/Shabunda-Project-Portfolio-Analysis-09062019\\_1.pdf](https://planetalphaforest.earth/wp-content/uploads/2017/06/Shabunda-Project-Portfolio-Analysis-09062019_1.pdf)




The Lega Indigenous People


- Protectors des forêts
- Gardiens de la culture
- Préserver la nature

### SHABUNDA DRC BIODIVERSITY PROJECT:

Purchase Biodiversity & Forest Conservation Offsets to Fulfill Personal, Corporate, City & Governmental Sustainable Development Goals



Enable Long-Term Social, Economic and Planetary Impacts  
Creating Legacy Forests for People, Biodiversity and the Planet



Planet Alpha Corp, 45 Prescott Street, Cambridge, MA 02139 [www.planetalphaforest.earth](http://www.planetalphaforest.earth) +1.800.777.0559

To register your project visit <https://planetalphaforest.earth/register-your-project/>

PARIS COMPLIANT DEVELOPMENT PHASE  
Country of Origin: DRC, Africa  
CDM Sectoral Scope # 14  
Project Name: OIERI Shabunda Project  
Project Number: OIERI, DRC-0046  
Vintage: 2019-2049  
Issued by: PAC, OIERI  
OIERI Char Aud Documents: [www.planetalphaforest.earth](https://planetalphaforest.earth)


**Biodiversity Portfolio Snapshot: 09-03-2019** Gross Portfolio Value (Est.) \$136,600,000 (30 Year) Benchmark: CUSTOM

Carbon Free	Green	Blue	Value	Duration	Year	Offset	Value	Energy	Renewable	Land Area	Method	Category
100%	100%	100%	\$136.6M	30	0	0	0	0	0	0	0	0

**Biodiversity Data Tables:**

Active Species	Plant	Animal	Fish	Reptile	Bird	Insect	Other	Endemic	Threatened
100%	100%	100%	100%	100%	100%	100%	100%	100%	100%

**GI & Planet Alpha Corp Shabunda Project: Into the Green Heart of Africa**



**Project Location:** Shabunda, DRC

**Project Phases:** 1. Conservation, 2. Restoration, 3. Sustainable Use


**Project Objectives:** Restore and conserve biodiversity, create jobs, improve livelihoods, and enhance community resilience.

PARIS COMPLIANT DEVELOPMENT PHASE  
Country of Origin: DRC, Africa  
CDM Sectoral Scope # 14  
Project Name: OIERI Shabunda Project  
Project Number: OIERI, DRC-0046  
Vintage: 2019-2049  
Issued by: PAC, OIERI  
OIERI Char Aud Documents: [www.planetalphaforest.earth](https://planetalphaforest.earth)

**Portfolio Snapshot: 09-03-2019** Gross Portfolio Value (Est.) \$136,600,000 (30 Year) Benchmark: CUSTOM

Shabunda DRC Project Map and 1968 Social Development Goals (SDG) Directed by Tribal Leaders and Village Authorities

### GI & PLANET ALPHA CORP SHABUNDA PROJECT: INTO THE GREEN HEART OF AFRICA



**Sustainable Development Goals:** 1. No Poverty, 2. Zero Hunger, 3. Good Health and Well-being, 4. Quality Education, 5. Gender Equality, 6. Clean Water and Sanitation, 7. Affordable and Clean Energy, 8. Decent Work and Economic Growth, 9. Industry, Innovation and Infrastructure, 10. Reduced Inequalities, 11. Sustainable Cities and Communities, 12. Responsible Consumption and Production, 13. Climate Action, 14. Life Below Water, 15. Life on Land, 16. Peace, Justice and Strong Institutions, 17. Partnerships for the Goals.

**Project Objectives:**

Objective	Target	Indicator	Impact
Open up the potential of rural areas and enhance commercial exchange	100% of the agricultural assets to be used	Number of agricultural households	Support for livelihoods and income generation
Improve agricultural productivity	The agricultural productivity to increase by 10% per household	Yield per hectare	Assist with agribusiness development
Improve local services to improve livelihoods	80% of the children in the village are well fed three times a week	Number of children undernourished	Build health, child and school with nutrition and sanitation programs
Improve forest services to improve livelihoods	80% of the population adopt the good practices towards the biodiversity	Number of households using sustainable practices	Identify economic food products to export to the market and create jobs in the value chain

# Contact us

[www.gieri.org](http://www.gieri.org)

E-mail: [info@gieri.org](mailto:info@gieri.org)

Patrick Kaka and Marcel Mulombo