



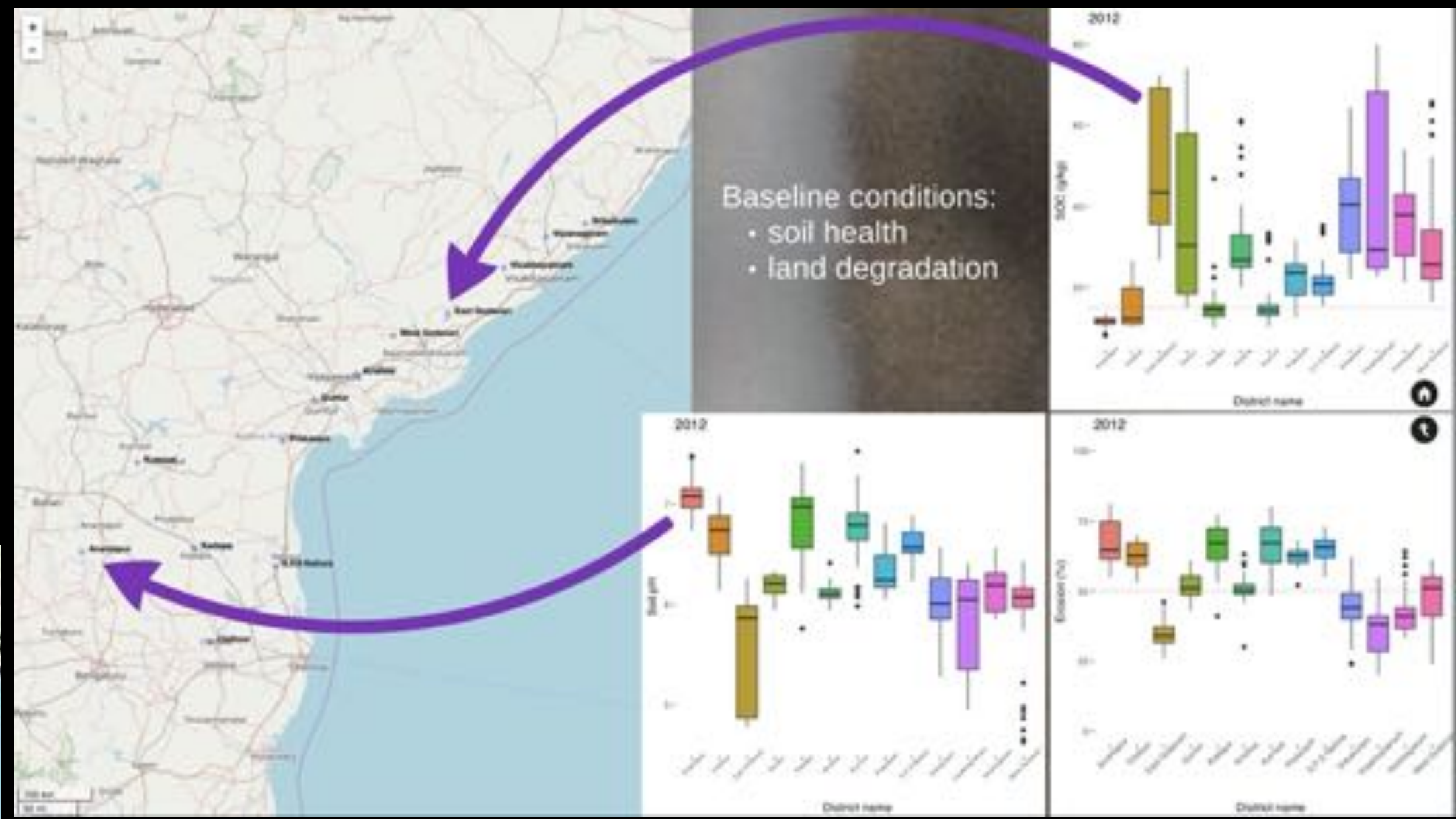
# Applications of the Land Degradation Surveillance Framework (LDSF)

<http://landscapeportal.org/blog/2015/03/25/the-land-degradation-surveillance-framework-lds/>

Leigh Winowiecki [L.A.Winowiecki@cgiar.org](mailto:L.A.Winowiecki@cgiar.org)

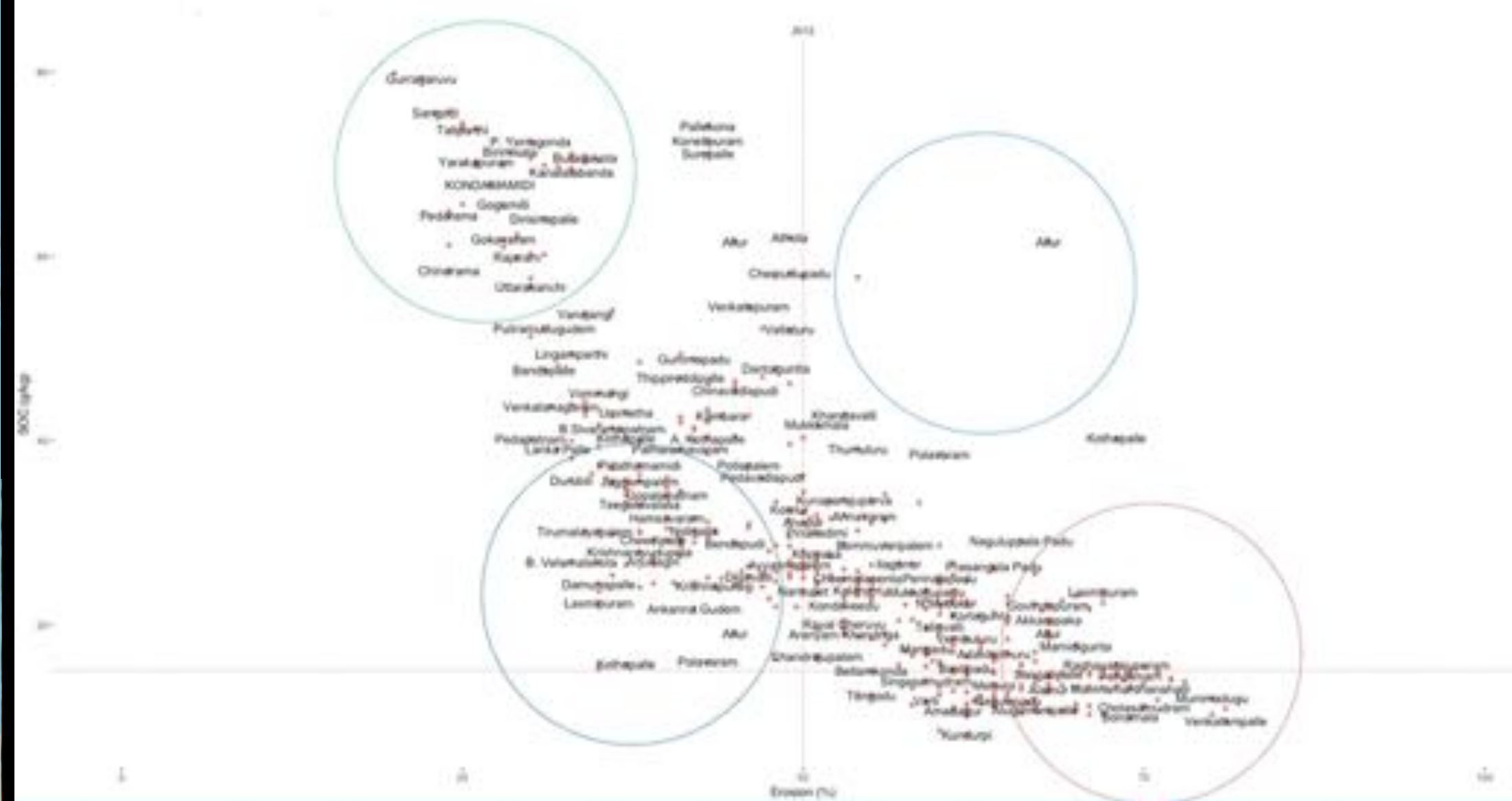
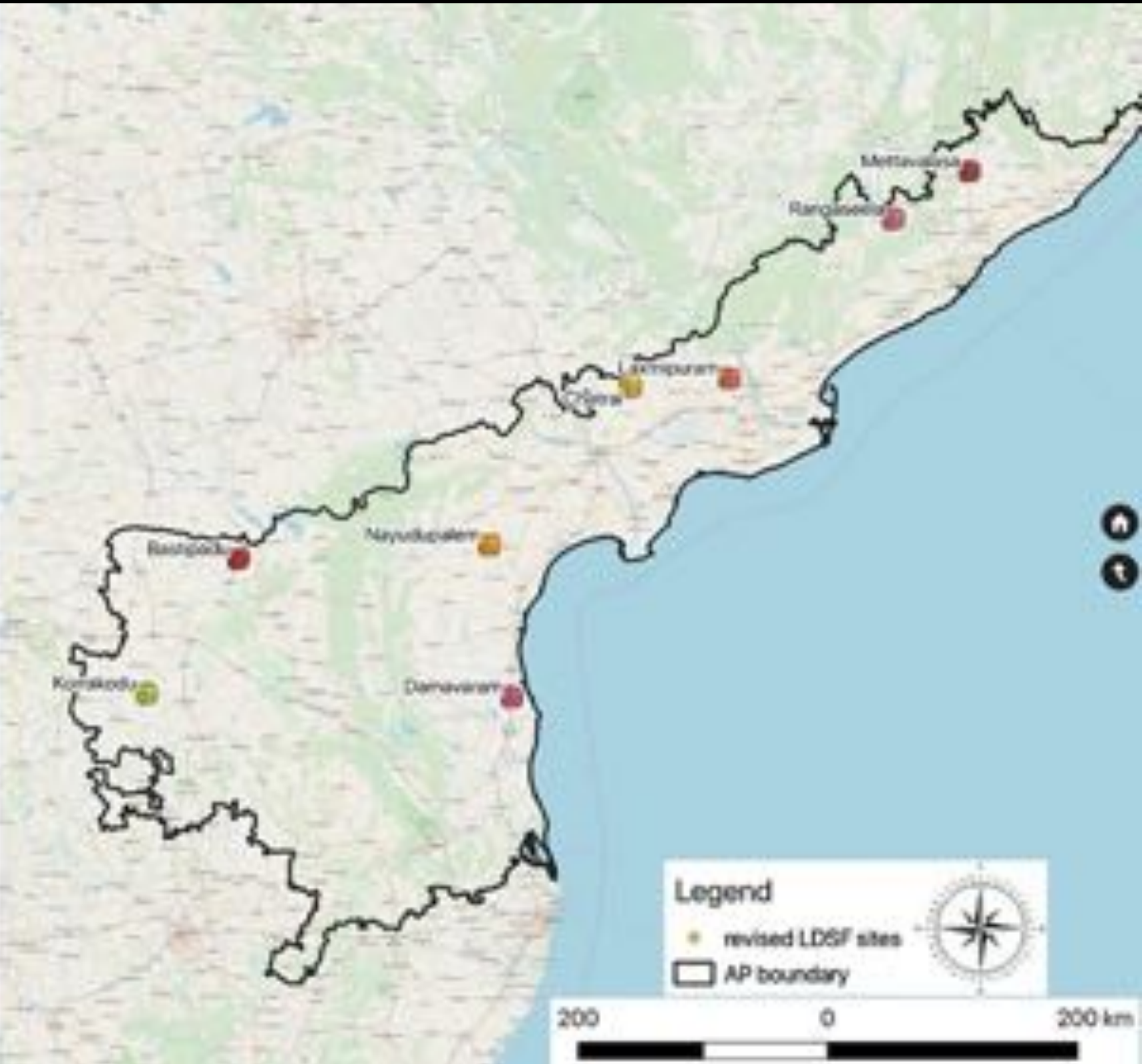
Tor-Gunnar Vågen [T.Vagen@cgiar.org](mailto:T.Vagen@cgiar.org)

# Assessing the Impacts of Natural Farming Practices in Andhra Pradesh (AP), India 2018-2022



## LDSF sites in AP

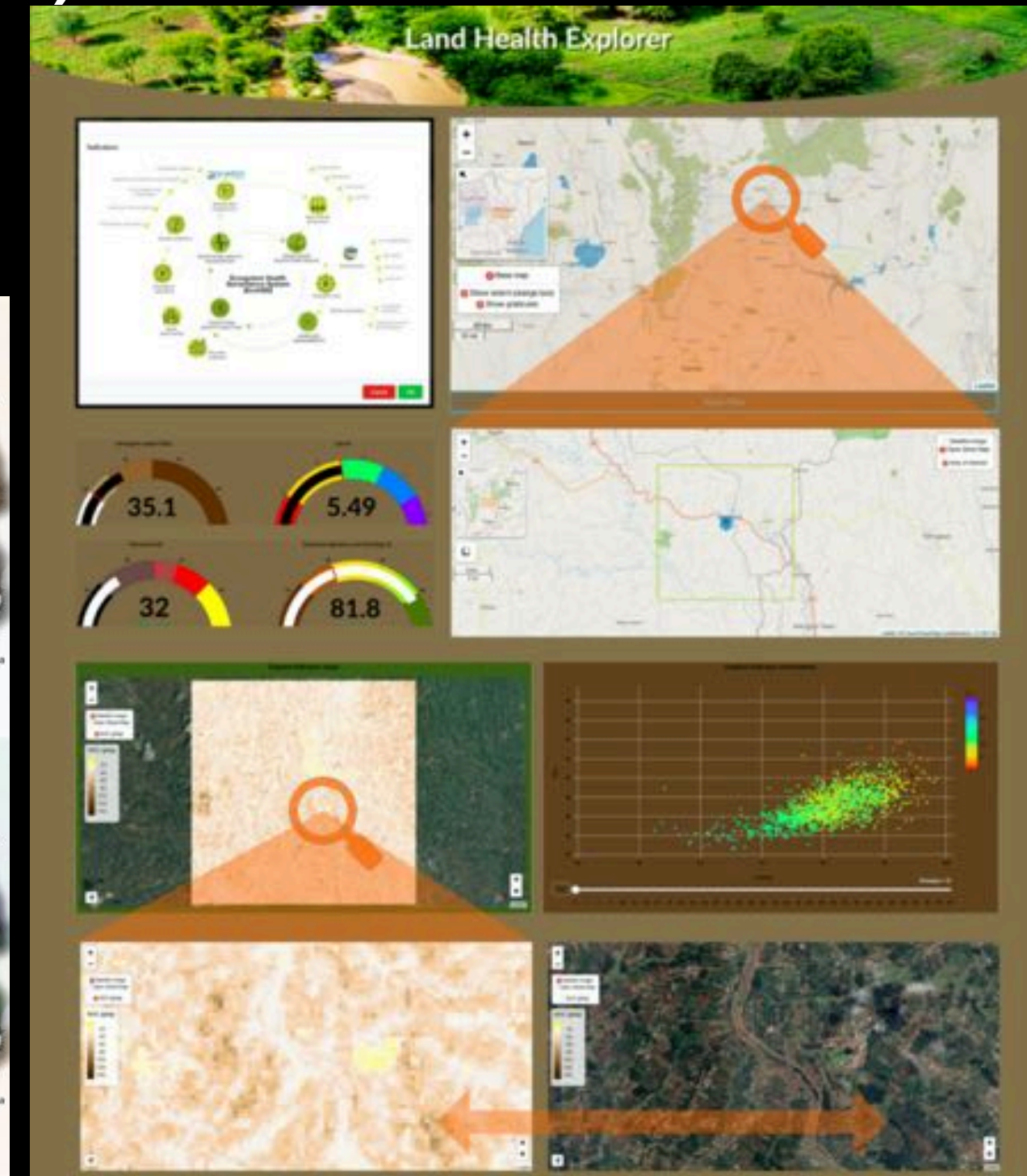
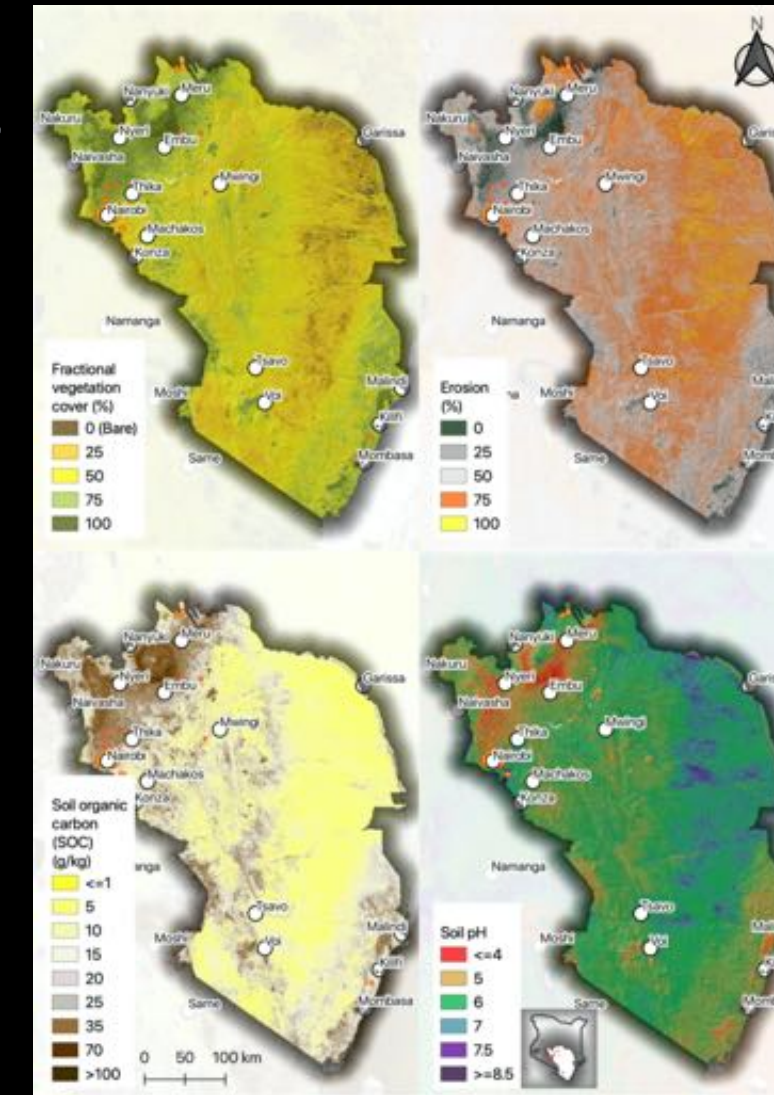
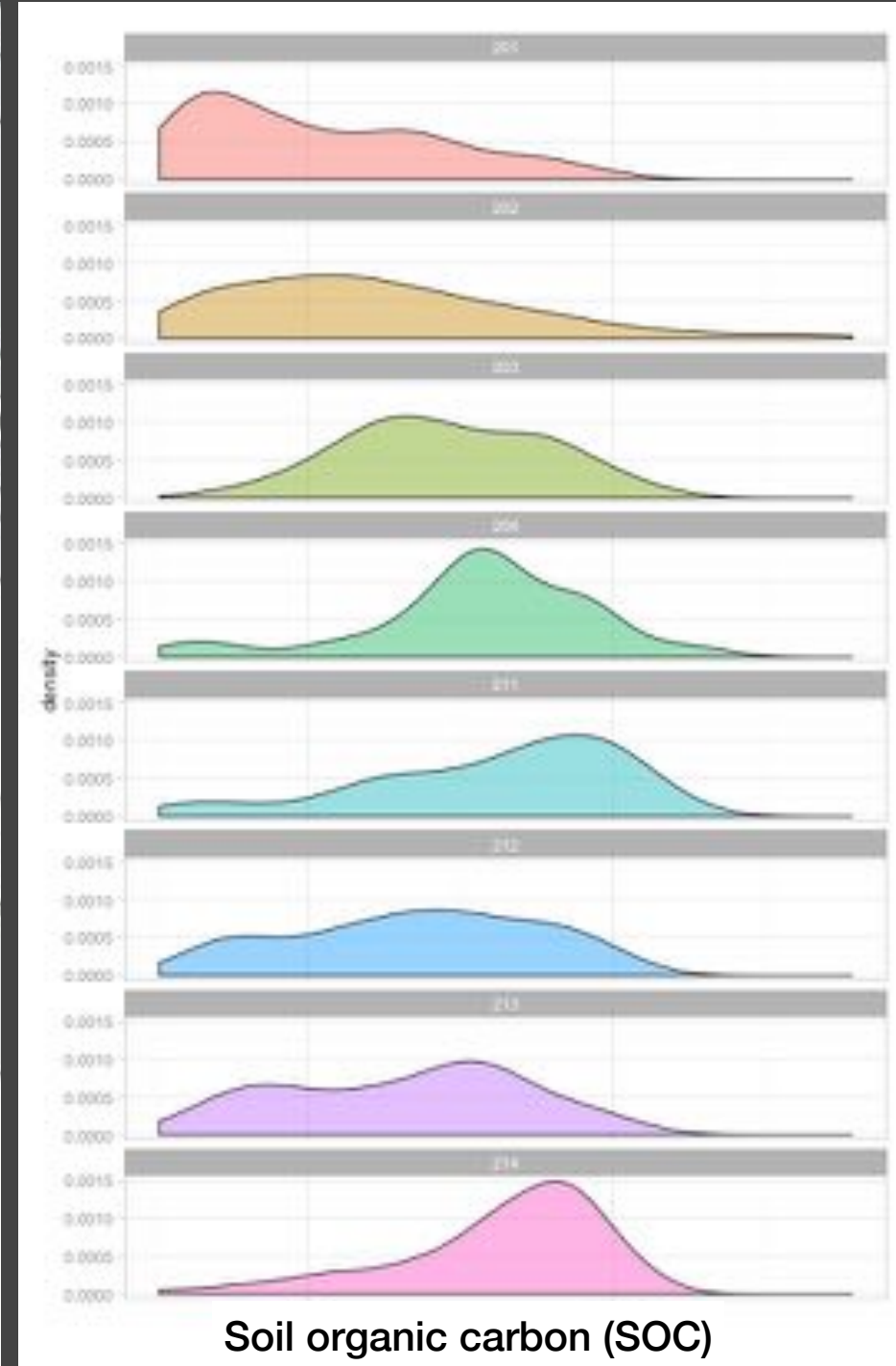
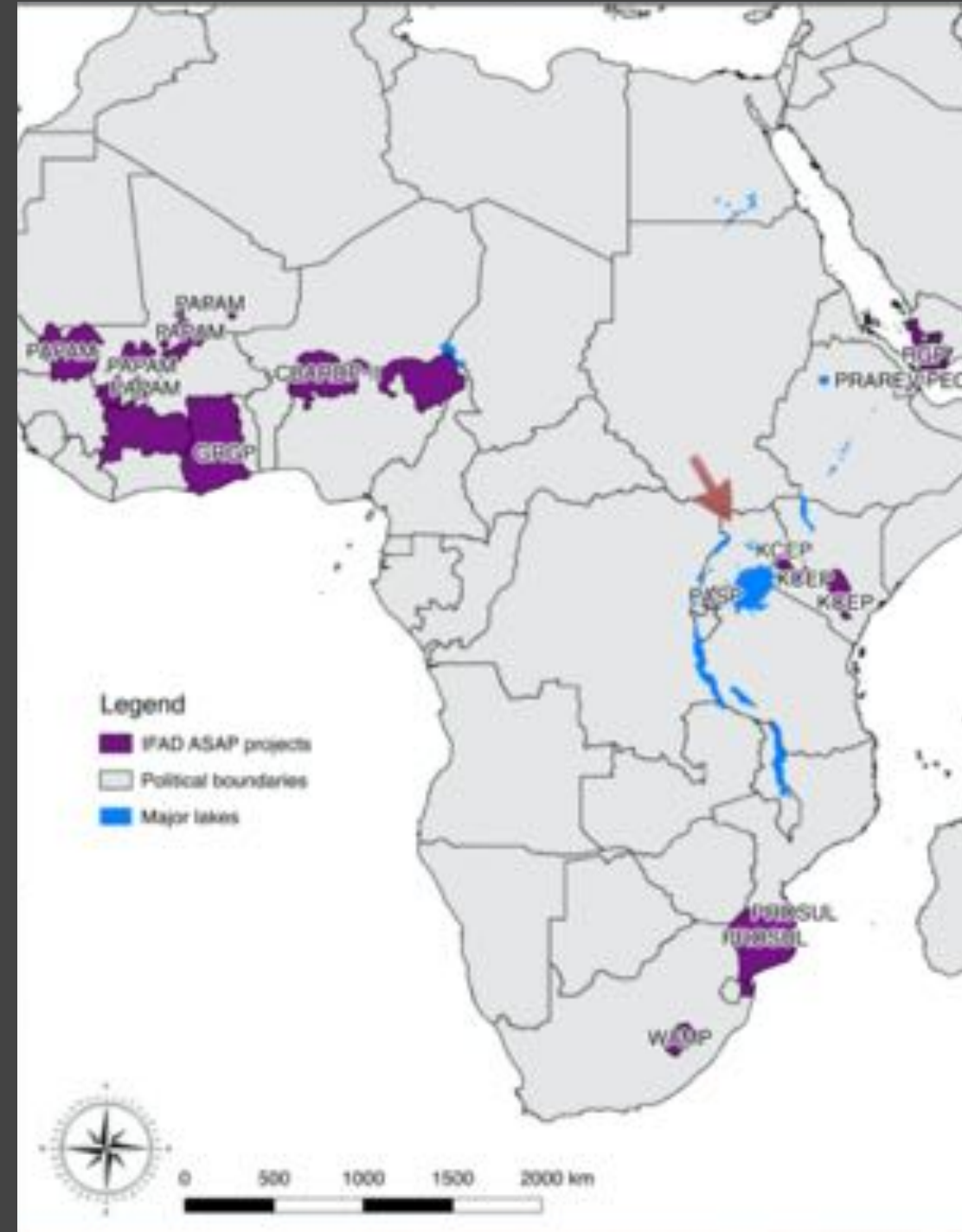
- Surveys starting in 2019
- Will conduct soil and land health baselines
- Will compare ZBNF farmers to conventional farms



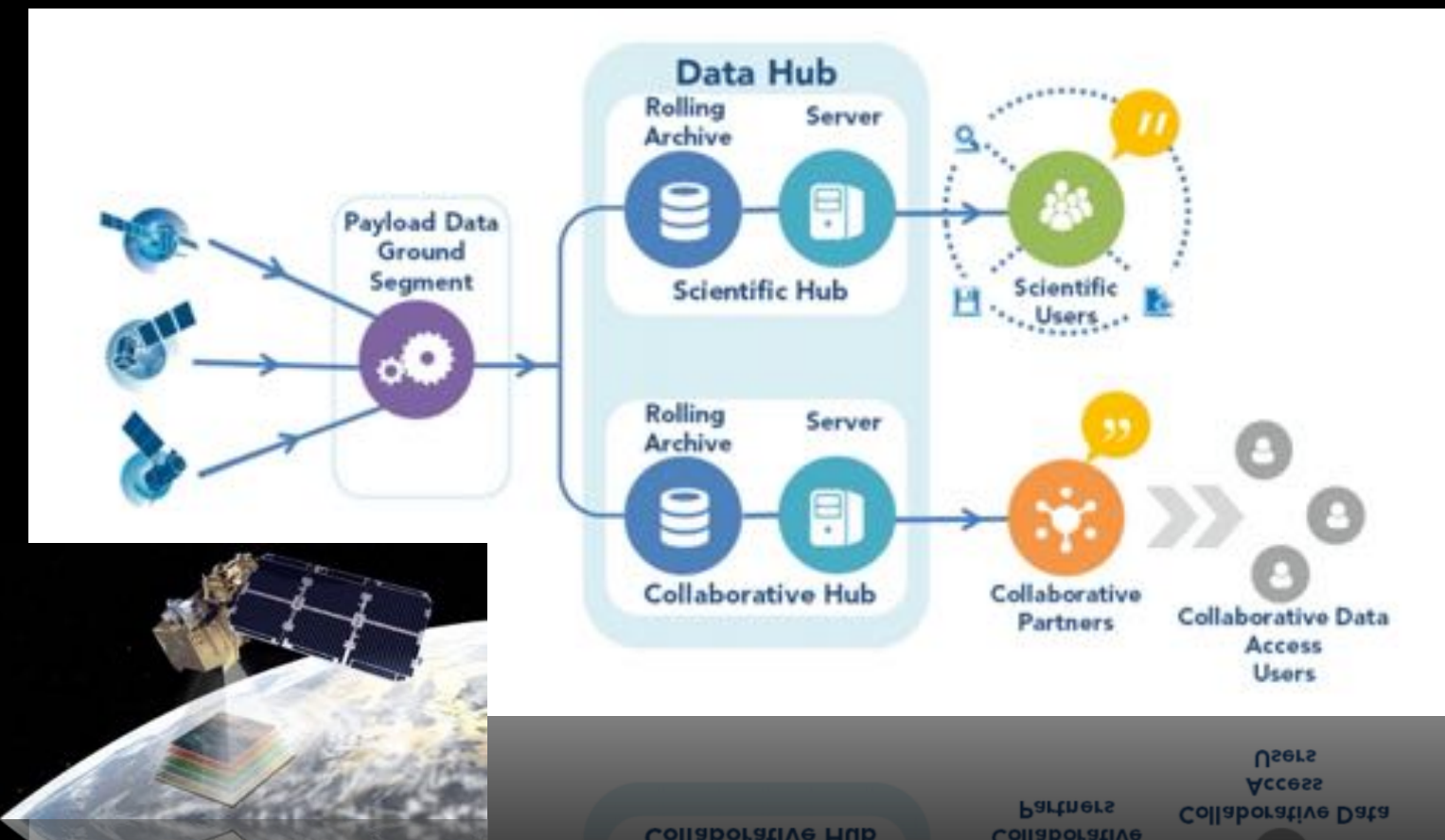
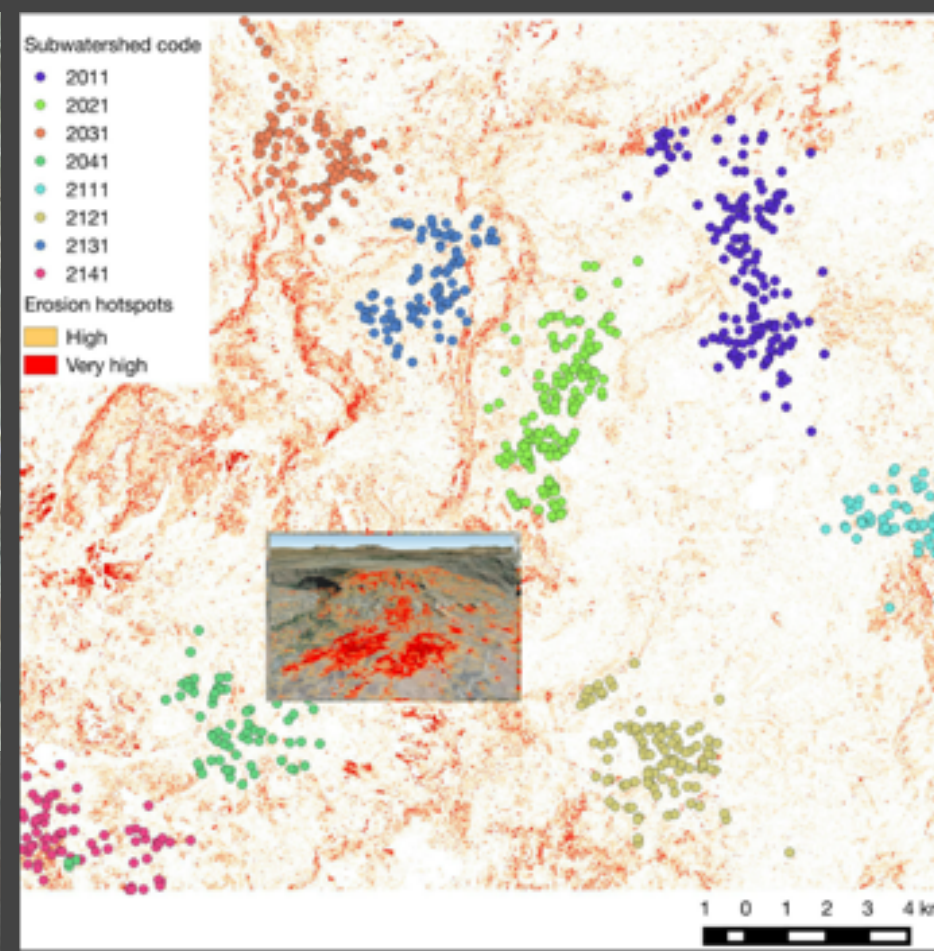
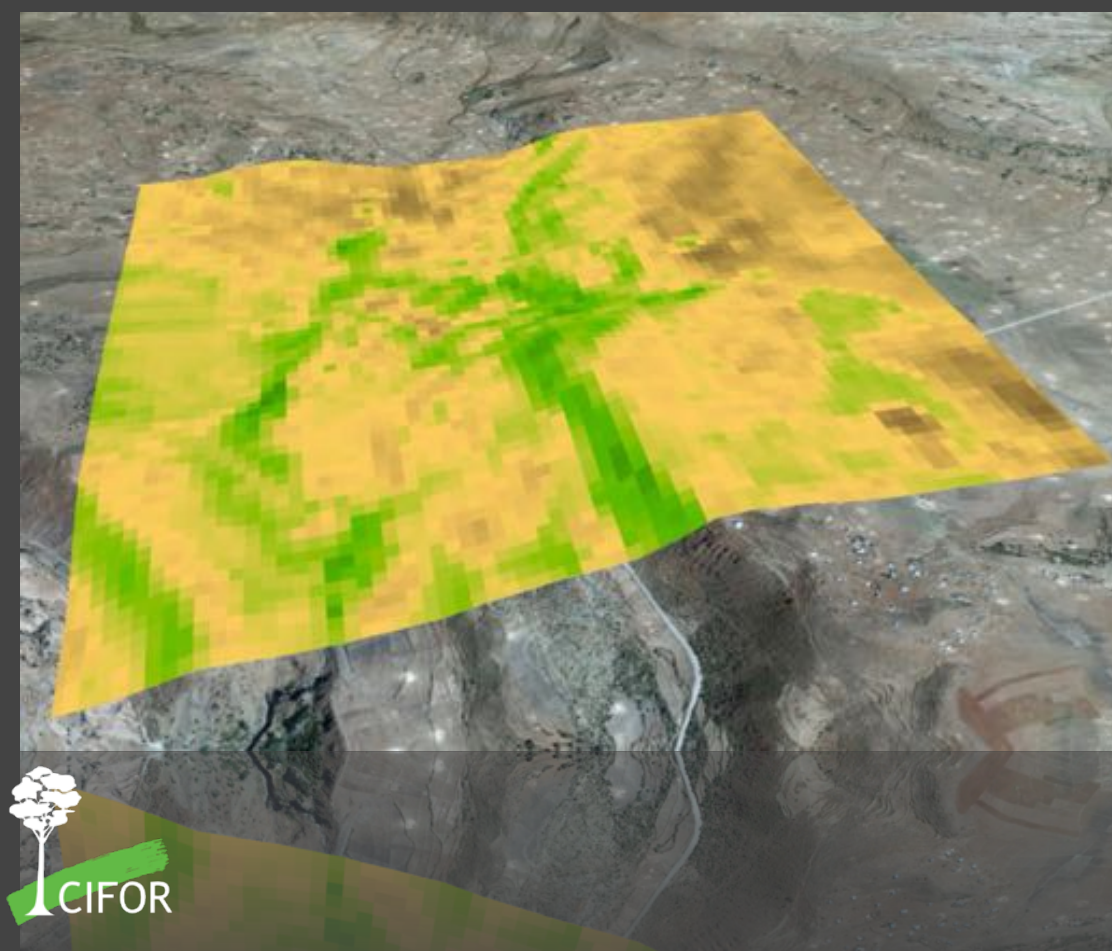
# International Fund for Agricultural Development (IFAD)

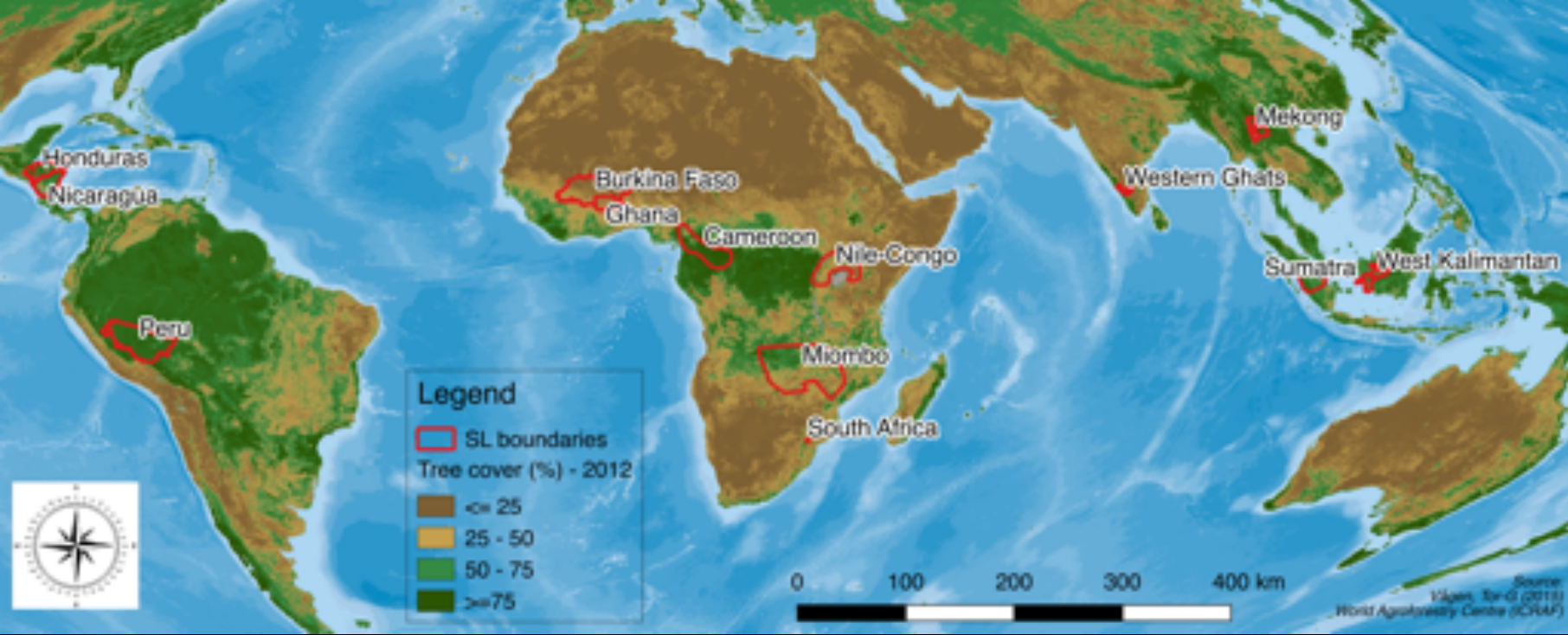
Adaptation for Smallholder Agriculture Programme (ASAP)  
in 15 countries

Strengthening Landscape-level Baseline  
Assessment and Impact-Monitoring in  
East and Southern Africa



Working with data from the European Space Agency (ESA), and in particular the Sentinel-2 Platform, the project is utilising state-of-the-art remote sensing sensors to assess ecosystem health at scale.





(Nicaragua and Honduras)

# Sentinel Landscapes Initiative 2013-2016



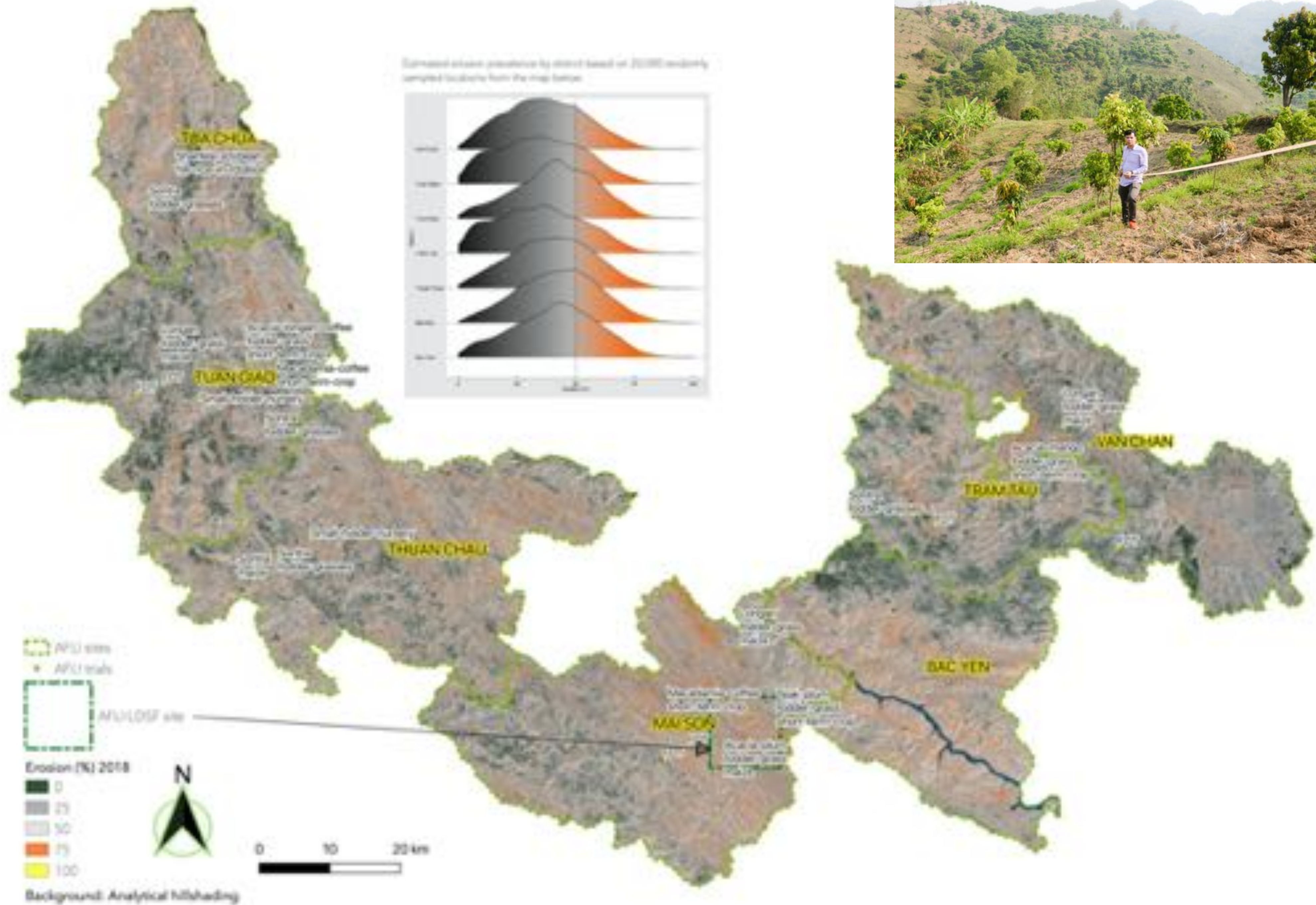
RESEARCH PROGRAM ON Forests, Trees and Agroforestry

<http://landscapeportal.org/sIExplorer/>

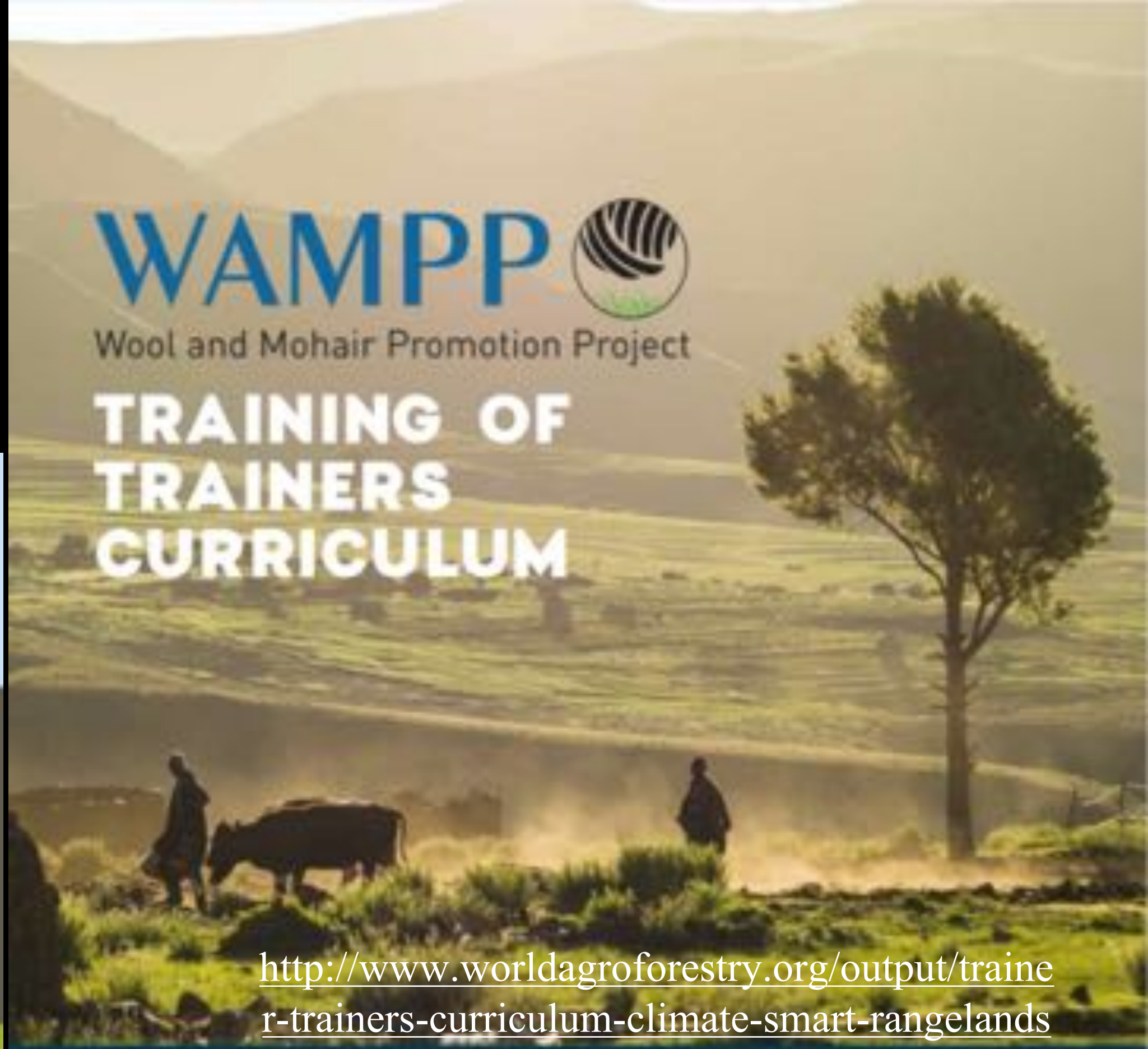
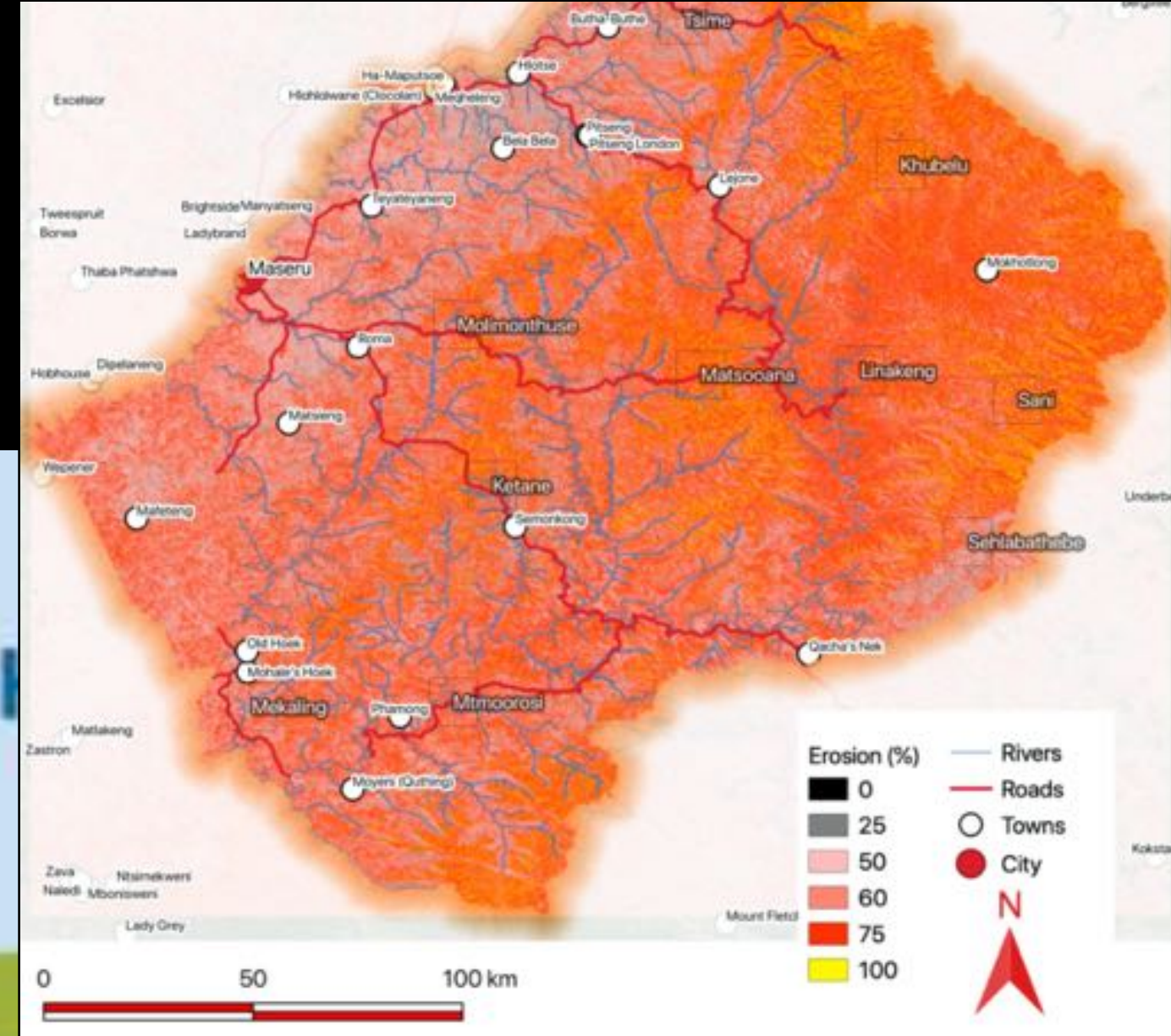
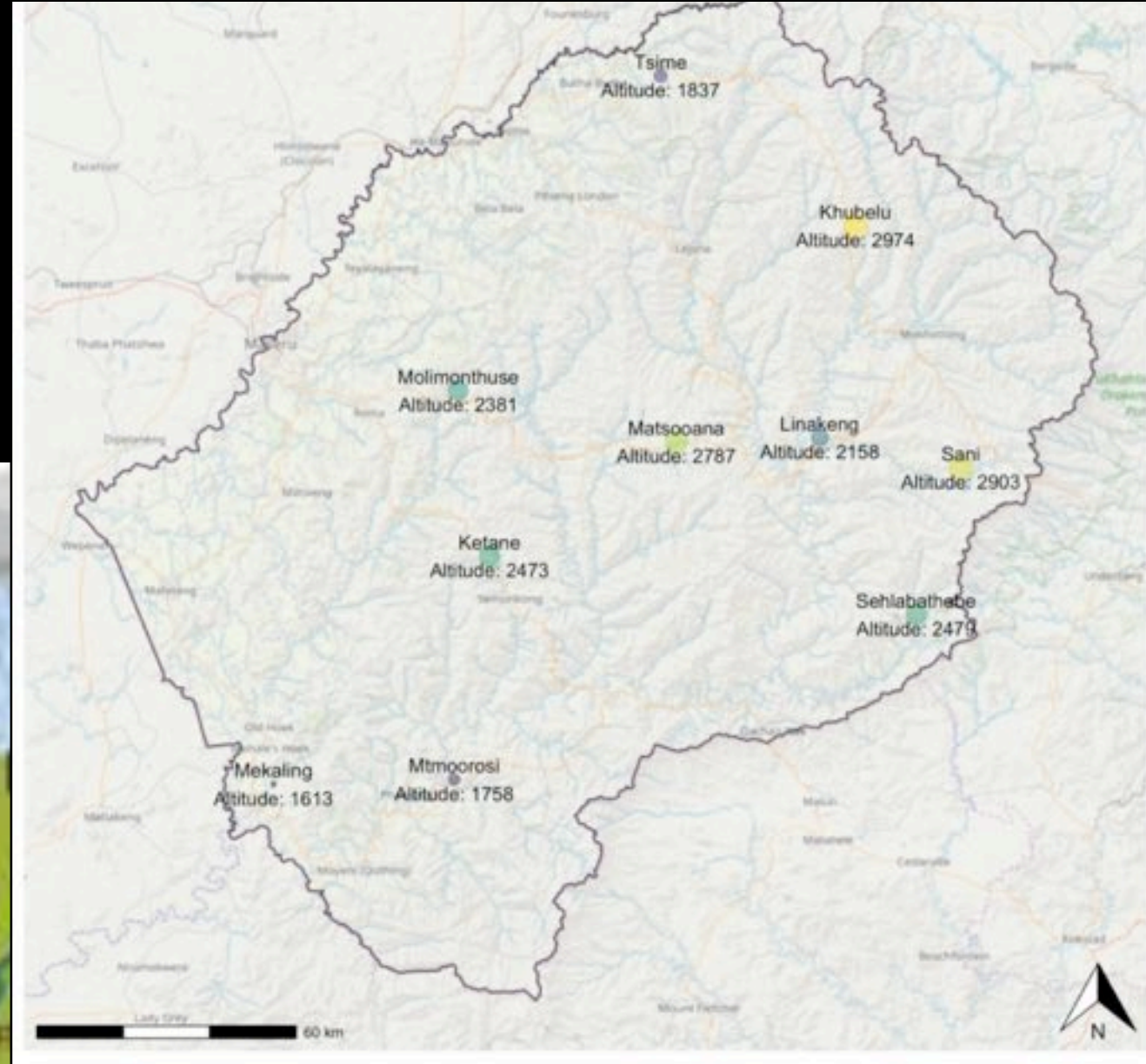




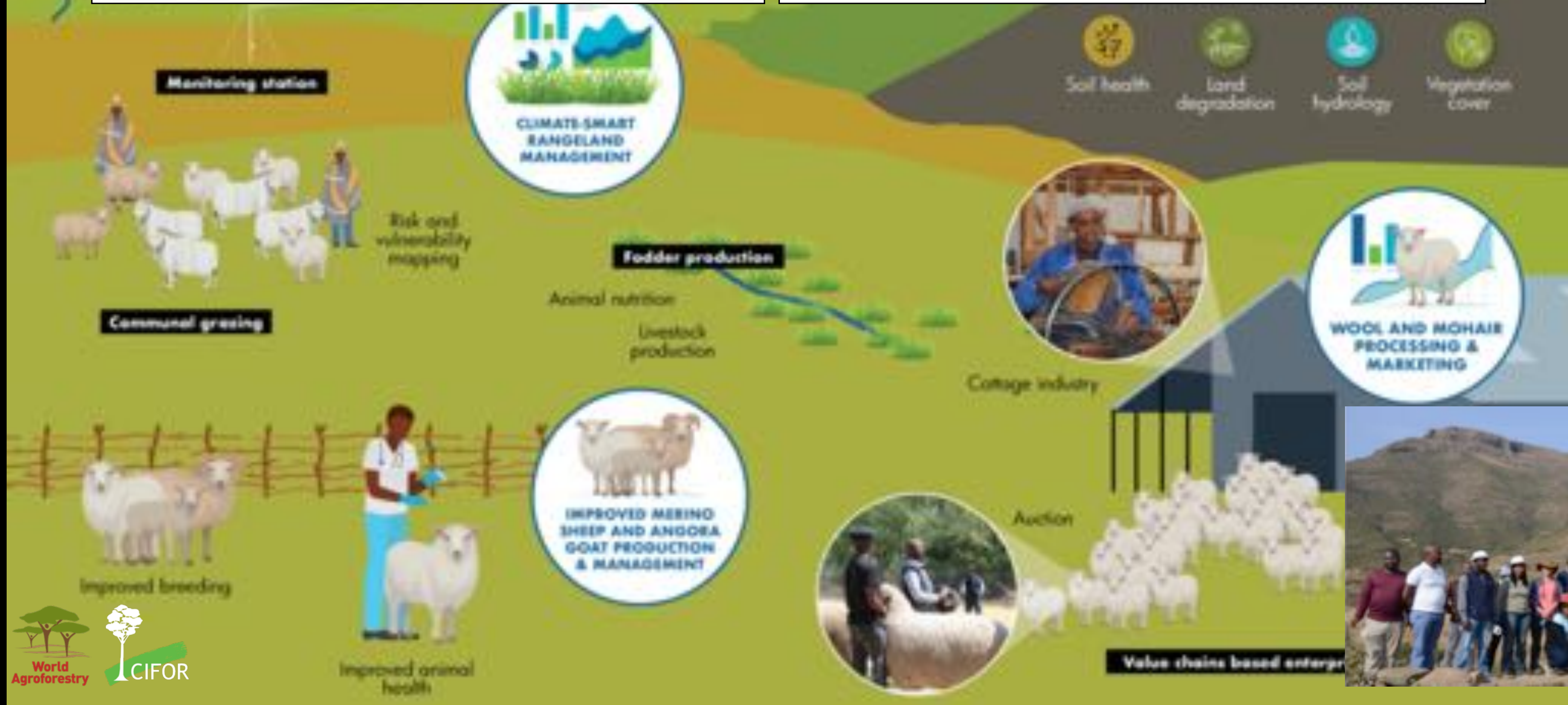
# Agroforestry for Livelihoods of Smallholder Farmers in North-West Vietnam (AFLI)



# A National System for Assessment and Monitoring of Rangeland Health in Lesotho



For the Department of Range Resources Management on climate-smart rangelands



Capacity development



# The LDSF is widely published

Example:

Vågen, T.-G., & Winowiecki, L. A. (2019). Predicting the Spatial Distribution and Severity of Soil Erosion in the Global Tropics using Satellite Remote Sensing. *Remote Sensing*, 11(15), 1800. <https://doi.org/10.3390/rs11151800>

